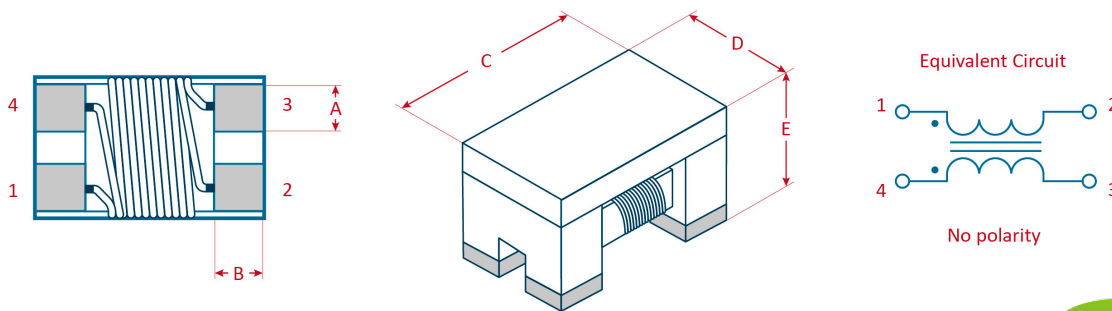


SPECIFICATION FOR APPROVED 樣品承認書

2024
NEW

機構圖 Shape and Dimensions(mm) :



Item	A	B	C	D	E
CMA05-M	0.45 Ref.	0.5 Ref.	2.0 ± 0.2	1.2 ± 0.2	1.2 ± 0.2

印字Marking : N/A

CMA05-M

Part No.	Impedance (Ω)	DC Resistance (Ω)	Rated Current (mA)	Rated Voltage (V)	Insulation Resistance (M Ω)	Insulation Test Voltage (V) (AC)
	@100MHz / 500mV	Max.	Max.		Min.	Max.
CMA05YT750-M	75±25%	0.35	330	50	10	125
CMA05YT900-M	90±25%	0.35	330	50	10	125
CMA05YT121-M	120±25%	0.3	370	50	10	125
CMA05YT161-M	160±25%	0.35	300	50	10	125
CMA05YT181-M	180±25%	0.35	330	50	10	125
CMA05YT221-M	220±25%	0.4	300	50	10	125
CMA05YT261-M	260±25%	0.4	300	50	10	125
CMA05YT361-M	360±25%	0.4	280	50	10	125
CMA05YT371-M	370±25%	0.5	100	50	10	125
CMA05YT391-M	390±25%	0.8	300	50	10	125

SPECIFICATION FOR APPROVED 樣品承認書

2024
NEW

Part No.	Impedance (Ω)	DC Resistance (Ω)	Rated Current (mA)	Rated Voltage (V)	Insulation Resistance (M Ω)	Insulation Test Voltage (V) (AC)
	@100MHz / 500mV	Max.	Max.		Min.	Max.
CMA05YT501-M	500 \pm 25%	0.5	250	50	10	125
CMA05YT601-M	600 \pm 25%	0.88	300	50	10	125
CMA05YT801-M	800 \pm 25%	0.88	300	50	10	125
CMA05YT921-M	920 \pm 25%	0.95	160	50	10	125

Ordering information

CMA - 05 - Y - T - 750 - M

(1) (2) (3) (4) (5) (6)

- (1) Type : COMMON MODE CHOKE
- (2) Size : 05 is size
- (3) Tolerance : Y= \pm 25%
- (4) Packaging style : Taping Reel
- (5) Inductance : 750 for 75 Ω , 900 for 90 Ω , 121 for 120 Ω ...
- (6) Item number : M

Characteristics

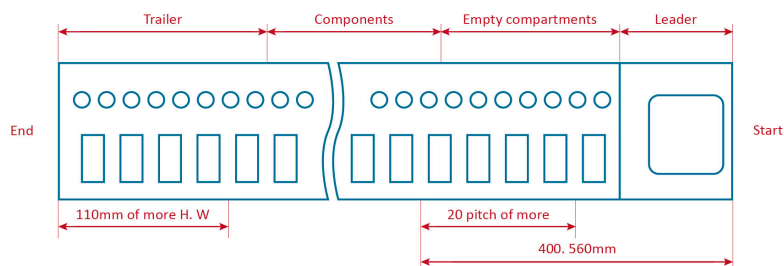
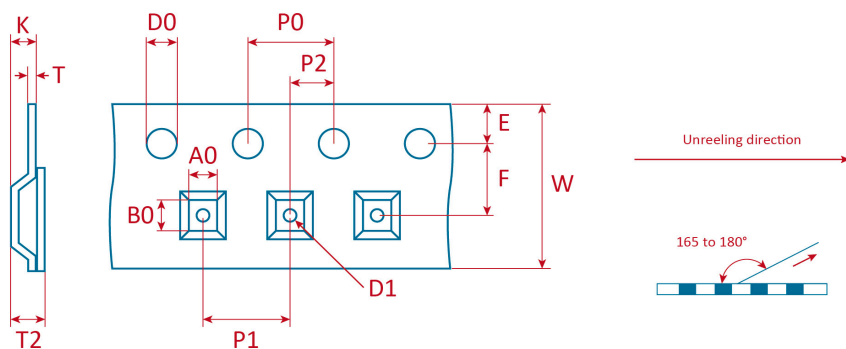
- Operating temperature range : -40 $^{\circ}$ C to +125 $^{\circ}$ C
- Shielding Type for 1.0 GHz

Test equipment

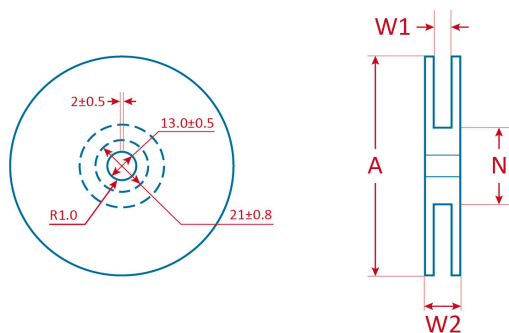
- HP-4286A

TAPE AND REEL SPECIFICATIONS

Dimensions in mm



Type	A0	B0	W	F	E	P1	P2	P0	D0	D1	K	T	T2
CMA05-M	1.5 ±0.1	2.35 ±0.1	8.0 ±0.1	3.5 ±0.05	1.75 ±0.1	4.0 ±0.1	2.0 ±0.05	4.0 ±0.1	1.55 ±0.05	1.0 ±0.1	1.67 ±0.15	0.22 ±0.05	1.67 ±0.25



Type	A	N	W1	W2
CMA05-M	178±2.0	50 Min.	10±1.5	20 Max.

Packing Quantity

2000 Pcs / Reel